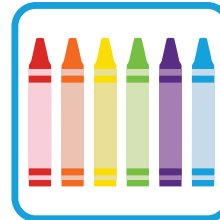
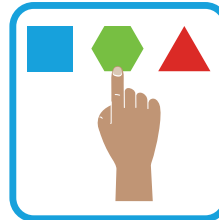
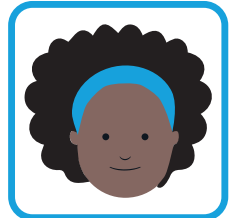


ShowMe Images are a great resource for anyone who uses visual supports to communicate with children. They are especially useful for children with special needs, autism, intellectual disability or who speak English as an additional language. The image set includes a diverse range of people, representative of our community.

## Presenting information in a visual way can:

- improve communication
- enhance language development
- support information processing
- promote independence
- develop confidence
- warn of impending change
- ease anxiety about upcoming events
- encourage understanding of appropriate behaviour.



## They are a fantastic resource for:

- teachers and educators
- teacher aides
- child care and early learning professionals
- occupational therapists
- speech pathologists
- psychologists and counsellors
- social workers
- early intervention specialists
- parents and carers.

**Get started today!**

## What can you create?

ShowMe Images can be used in a range of communication tools:

✓ behaviour plans

✓ communication books

✓ teaching and learning materials

✓ worksheets

✓ social stories

✓ labels

✓ picture dictionaries

✓ posters

✓ charts and displays

✓ flash cards

✓ games and activities

✓ workbooks

✓ documents

✓ visual schedules

**The possibilities are endless!**

# Order ShowMe Images now!

The introductory Education Essentials set has over 500 images and some helpful templates all on a handy USB flash drive to get you started. We've developed an easy to use interface to help you find the images you need.



Use the order form below



Shop online at [showmeimages.com](http://showmeimages.com)

Use the code **ShowMeDM** at the checkout for free shipping within Australia!

## Yes, please send me ShowMe Images – Education Essentials!

For 1 person

\$89

Perfect for a parent, teacher or therapist.

For a team

\$199

Use with your team in your workplace, school or clinic.

For commercial use

\$399

Use these images in products you sell, like resources or apps.

Plus postage \$8

Total order \$

Full name:

Daytime phone:

Organisation:

Mobile:

Address:

Email:

Suburb/City:

State:

Postcode:

### Credit Card

Card type:  Visa  Master Card  American Express

Card number:

Expiry date:  CCV:

Signature:

### EFT

BSB: 013 355

Account number: 220 524 519

Account name: Info Access Group Pty Ltd

Reference: ShowMeDM + your name

### Cheque

Cheque payable to  
Info Access Group  
Pty Ltd



Post this form to ShowMe Images  
Suite 41, 195 Wellington Road  
Clayton Vic 3168



[info@showmeimages.com](mailto:info@showmeimages.com)



(03) 9585 2299

## For more information

Visit [showmeimages.com](http://showmeimages.com) to preview our images and sample sheets, find out more about pricing and licences, discover what people think of our images, and read about the next set of images we have in development. Find us on Facebook, Twitter and LinkedIn.

ShowMe Images is created by the Information Access Group.

ABN: 68 607 527 686